

Installation instructions

Subject

Car2PC-VAG adapter for Car PC / laptop integration into car stereo and AUX Interface for MP3 player

Models Supported

VW 1998 and up

Audi 1998 and up (except Delta Stereo)

Note: *Models equipped with the 'Symphony II' (6-disc in-dash) headunit will require PIE part# AA3-HAR to gain access to the external CD-Changer port (8-pin data port)*

Seat 1998 and up

Skoda 1998 and up

Disclaimer

Modifying the radio may void any outstanding warranty it may have.

- This product is not affiliated with any of the OEM manufactures
- There are no warranties expressed or implied by purchase of this product
- While every care has been taken to provide a quality product, we cannot guarantee the Car2PC-VAG adapter to function correctly if installation is not done according to the instructions in this guide
- We're not liable for misuse of this product. Misuse includes improper installation, damage to the board or radio while trying to install, and illegal use of the modified radio

Tools needed:

1. Car stereo removal strips. One can be found at:

<http://www.installer.com/cars/volkswagon.html>

Preparation

1. Turn off car engine and remove key from ignition
2. Using the stereo removal tools carefully remove radio from the pocket it sits in
3. Locate the CD Changer cable or socket on a radio. Usually located at the left upper corner of the radio when looking from the front of the stereo.

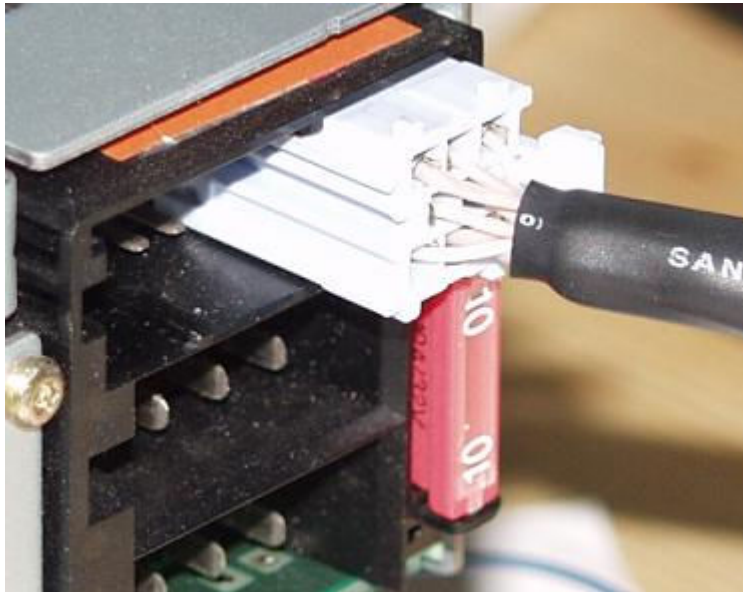
Note: For all VW/AUDI single DIN stereos it has 8 pins in 3 rows. For newer models (Touran, Golf V, Touareg) with double DIN stereos it is a 12 pin 2 row connector.

4. Unplug CD Changer cable from the radio if necessary

Note: Factory or aftermarket CD Changer will no longer work after you install Car2PC adapter!

Adapter installation

5. Securely attach Car2PC connector to the CD Changer port of the car stereo. Make sure the latch is secured and connector do not fall apart.



6. Attach the black single cable with washer on it to the back bolt of the car stereo.
Note: Without attaching the black cable to the chassis of the stereo Car2PC-VAG adapter will not work!
7. Find a place where you can place Car2PC. In all VW/AUDI there is enough room in the dash to place Car2PC.
Note: Make sure you mount Car2PC in a place with enough room so when you mount the car stereo back you do not break the adapter
8. You may use glove box or other spaces in a dash to direct USB+ Audio cables out
9. Mount your car stereo back into the dash, make sure it's clips are securely fastened
10. Now you can turn you car stereo on and switch it over to CD Changer mode. It should show Disk 1, Track 01 on a display. If it is not - see Troubleshooting section.
11. **Congratulations!** You have installed Car2PC-VAG adapter and you may use it right away either with your PC/laptop or as AUX input for any multimedia player (iPod, Zen etc)

Driver installation

12. Make sure you turn your car stereo on
13. Connect USB cable to your PC/laptop

14. When connected, the PC running Windows 2000 or XP will prompt

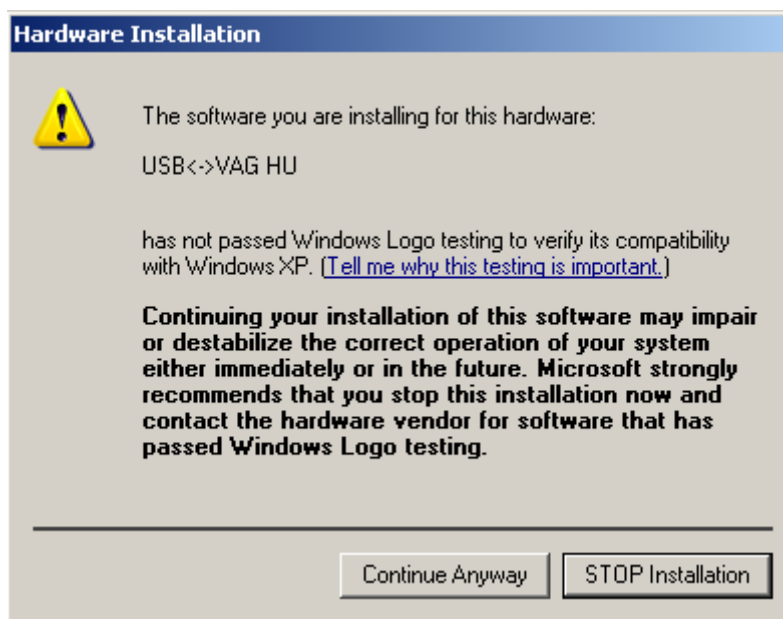


And then the dialog below will appear:



15. Insert driver's disk into CD drive and click Next

16. When Windows comes up with the message below, just click "Continue Anyway" button



17. This is it. Driver installed and it is ready to be used with the included WinAmp software.

Software installation

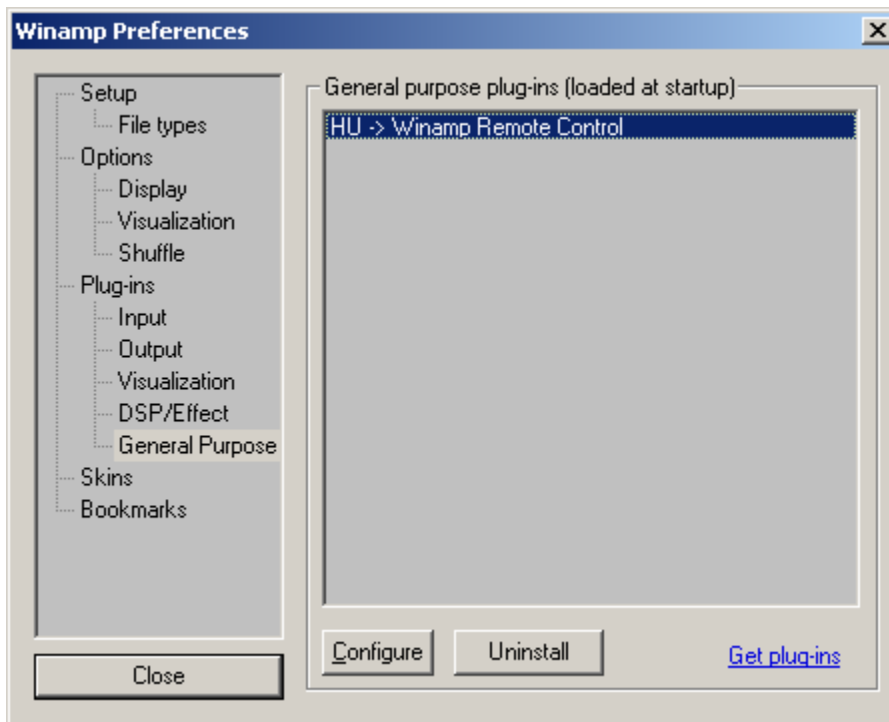
18. Locate the directory D:\winamp2\ and run the winamp295.exe file. Follow the instructions on a screen
19. Once installed make sure to run the plug-in installation located in D:\hump3_plugin directory

Configuring Car2PC

WinAmp plug-in included on a disk supports very simple concept of playlists. Whenever you select buttons 1 through 6 on your headunit, plugin will load the appropriate playlist and start playing it from the position it remembers.

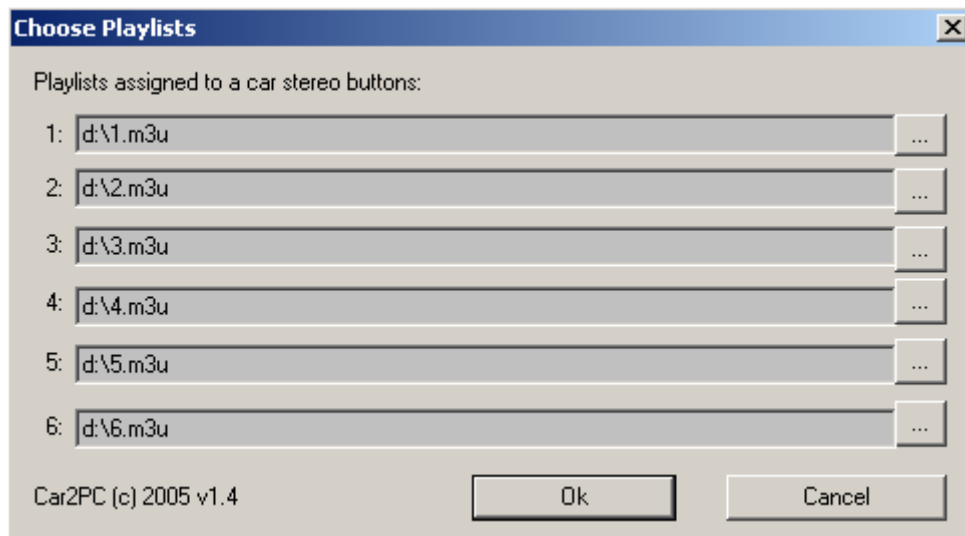
In order to configure which playlist will be playing upon button press, do the following:

1. Open WinAmp
2. Click Options->Preferences->Plug-ins->General Purpose->"HU -> WinAmp Remote Control" as shown below:



3. Click on Configure button

4. On the dialog below you will be able to choose the playlist for every button from 1 to 6

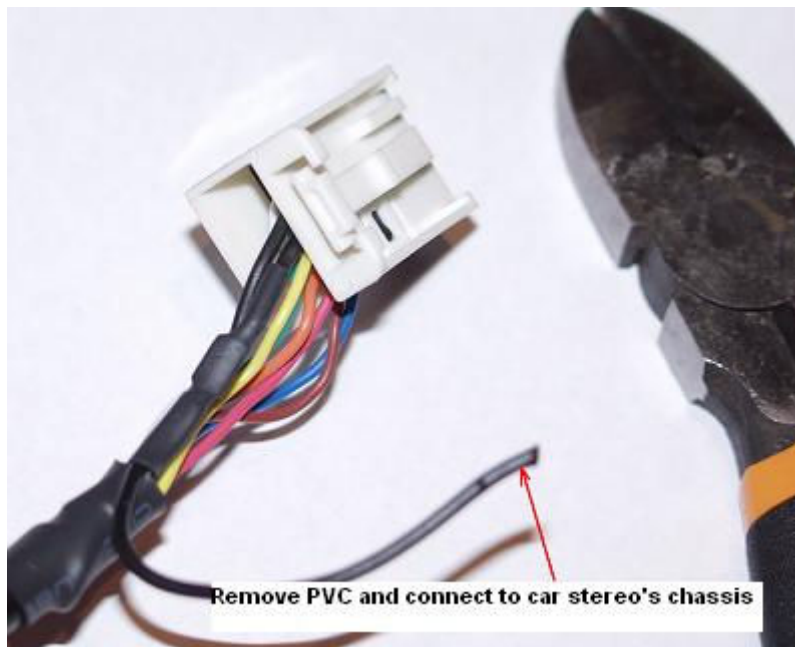


5. Once done, click Ok

Troubleshooting

Note: **Applicable to some double DIN radios only**

In case if double DIN radio says CD Error or No CD after you connected the adapter, simply cut the black wire right next to the 12 pin connector (as shown below), strip the wire and connect it to the stereo chassis.



Make sure the connection is firm. Stereo should be able to see the adapter now.