

## Installation instructions

### **Subject**

Car2PC-TOY adapter for Car PC / laptop integration into car stereo and AUX Interface for MP3 player for Toyota, Lexus, and Scion car make

### **Models Supported**

Toyota 98-03 \*

Toyota 04-06 (with or without navigation)

Lexus 01-03 \*

Lexus 04+

Scion 03+

\* - Units **with navigation** require Y cable

### **Disclaimer**

Modifying the radio may void any outstanding warranty it may have.

- This product is not affiliated with any of the OEM manufactures
- There are no warranties expressed or implied by purchase of this product
- While every care has been taken to provide a quality product, we cannot guarantee the Car2PC-TOY adapter to function correctly if installation is not done according to the instructions in this guide
- We're not liable for misuse of this product. Misuse includes improper installation, damage to the board or radio while trying to install, and illegal use of the modified radio

### **Tools needed:**

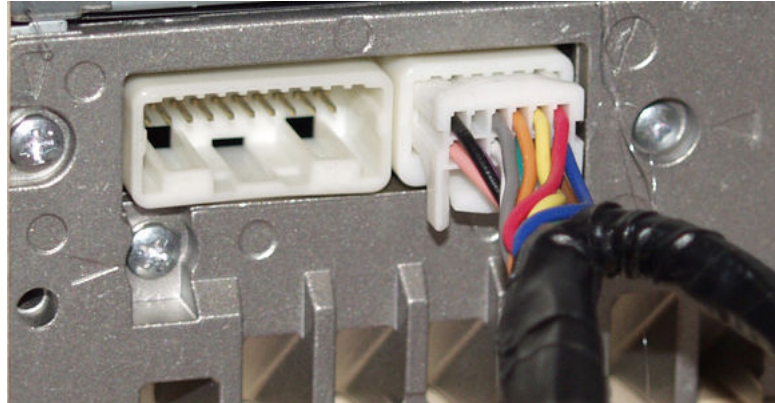
None

### **Preparation**

1. Turn off car engine and remove key from ignition
2. Un-mount your radio from the dash in order to get access to the back side of the radio.

### **Adapter installation**

3. Your car stereo can have either 12 pins square connector or 12 pin shaped one. Please make sure you choose the appropriate cable for your car stereo (TOY1 or TOY). Attach the matching cable to the back of the Toyota stereo as shown below



4. Find a place where you can place Car2PC. In many cars there is enough room in the dash to place Car2PC.  
 Note: Make sure you mount Car2PC in a place with enough room so when you mount the car stereo back you do not break the adapter
5. You may use glove box or other spaces in a dash to direct USB+ Audio cables out
6. Mount your car stereo back into the dash, make sure it's clips are securely fastened
7. Now you can turn you car stereo on and switch it over to CD Changer mode. It should show Disk 1, Track 01 on a display.
8. **Congratulations!** You have installed Car2PC-TOY adapter and you may use it right away with your PC/laptop

***Driver installation***

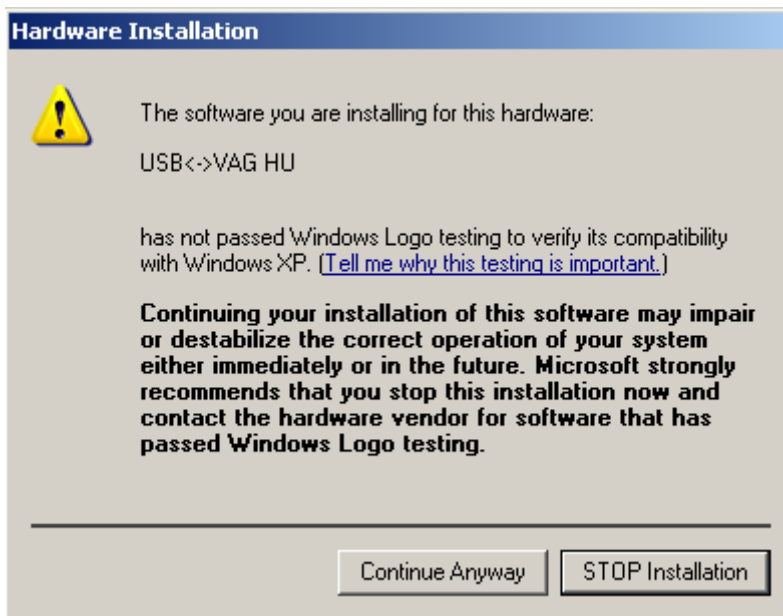
9. Make sure you turn your car stereo on
10. Connect USB cable to your PC/laptop
11. When connected, the PC running Windows 2000 or XP will prompt



And then the dialog below will appear:



12. Insert driver's disk into CD drive and click Next
13. When Windows comes up with the message below, just click "Continue Anyway" button



14. This is it!  
Driver installed and it is ready to be used with the included WinAmp or Windows Media Player.

## Software installation

### WinAmp

15. Locate the directory D:\winamp2\ and run the winamp295.exe file. Follow the instructions on a screen
16. Once installed make sure to run the plug-in installation located in D:\hump3\_plugin directory

### Windows Media Player

Usually Windows Media Player already preinstalled in a system. If not, visit the following link and install the WindowsMedia Player according to instructions on a web page:

<http://www.microsoft.com/windows/windowsmedia/default.mspx>

Once you have Windows Media Player installed, you may run the following file:

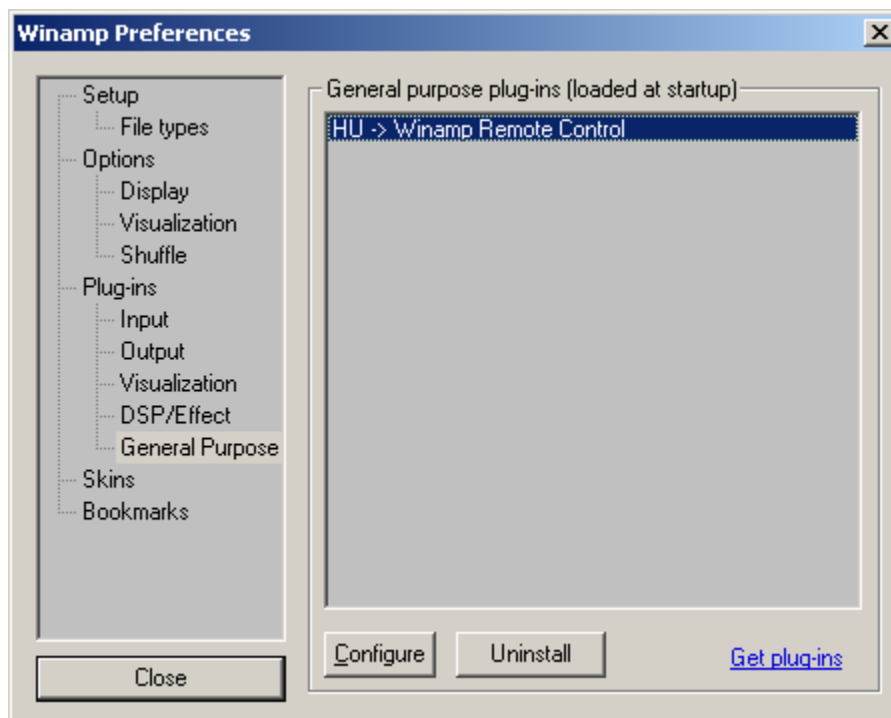
D:\wmp\_plugin\wmphump\_1\_5\_1.exe and install the plugin for Car2PC adapter.

### Configuring Car2PC under WinAmp

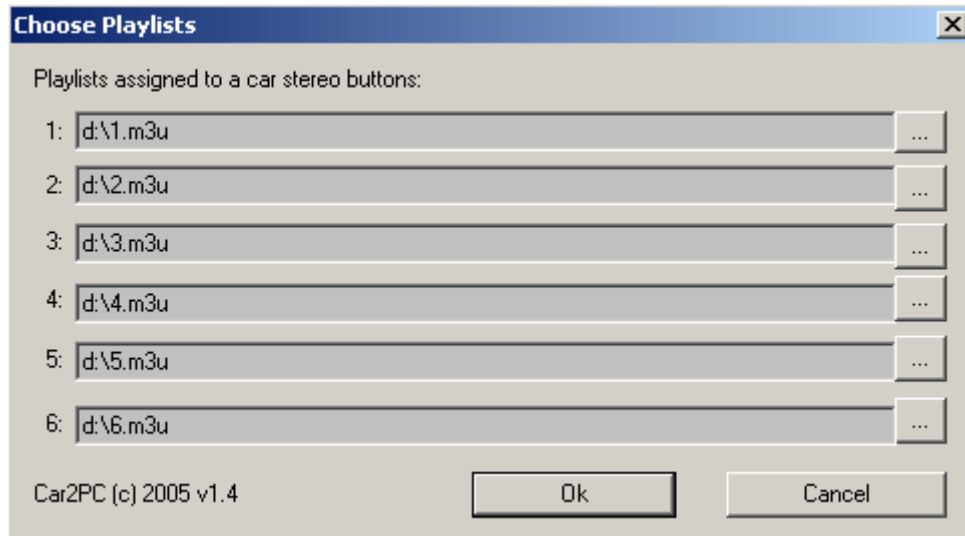
WinAmp plug-in included on a disk supports very simple concept of playlists. Whenever you select buttons 1 through 6 on your headunit the plugin will load the appropriate playlist and start playing it from the position it remembers.

In order to configure which playlist will be playing upon button press, do the following:

1. Open WinAmp
2. Click Options->Preferences->Plug-ins->General Purpose->"HU -> WinAmp Remote Control" as shown below:



3. Click on Configure button
4. On the dialog below you will be able to choose the playlist for each button from 1 to 6



5. Once done, click Ok

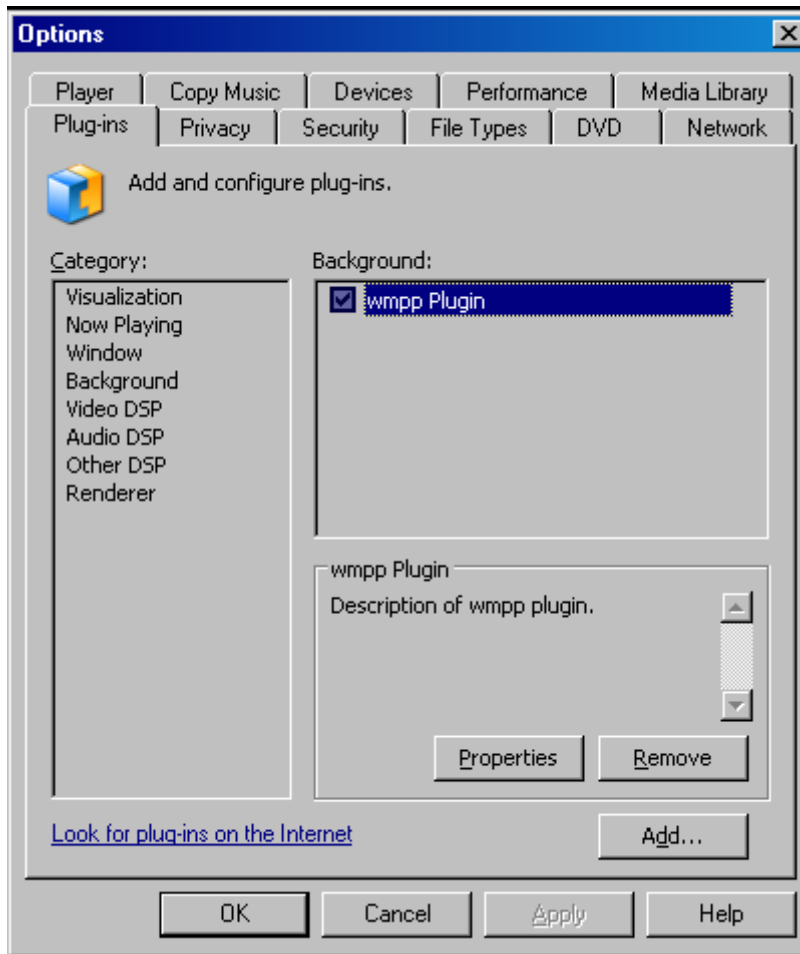
### ***Configuring Car2PC under WMP***

The WMP plug-in on CD disk supports very simple concept of playlists. Whenever you select buttons 1 through 6 on your head unit the plug-in will load the appropriate playlist and start playing it from the position it remembers in the configuration file.

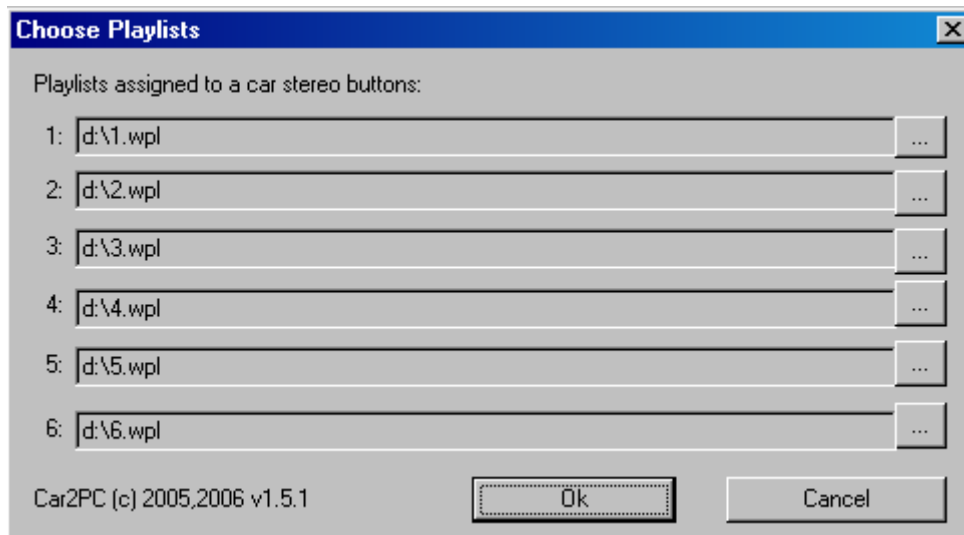
In order to configure which playlist will be playing upon button press, do the following:

1. Open Windows Media Player

2. Click Tools->Plugins->Background->wmp plugin” as shown below:



3. Click on Properties button
4. On the dialog below you will be able to choose the playlist for each button from 1 to 6



5. Once done, click Ok