

Installation instructions

Subject

Car2PC-MBUS (HON) adapter for Car PC / laptop integration into car stereo and AUX Interface for MP3 player

Models Supported

Honda Accord 98-02

Honda Civic 99-05 (some exceptions apply)

Honda CRV 99-03

Honda Odyssey 99-03

Honda Pilot 03-04

Honda Prelude 99-01

Honda S2000 00-05

Acura CL 99-03

Acura TL 99-03

Acura MDX 01-05

Disclaimer

Modifying the radio may void any outstanding warranty it may have.

- This product is not affiliated with any of the OEM manufactures
- There are no warranties expressed or implied by purchase of this product
- While every care has been taken to provide a quality product, we cannot guarantee the Car2PC-HON1 adapter to function correctly if installation is not done according to the instructions in this guide
- We're not liable for misuse of this product. Misuse includes improper installation, damage to the board or radio while trying to install, and illegal use of the modified radio

Tools needed:

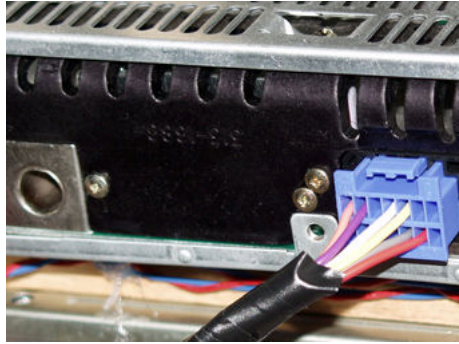
None

Preparation

1. Turn off car engine and remove key from ignition
2. Un-mount your radio from the dash in order to get access to the back side of the radio.

Adapter installation

3. Attach square 14 pins connector to the back of the Honda stereo as shown below



4. Find a place where you can place Car2PC. In many cars there is enough room in the dash to place Car2PC.
 Note: Make sure you mount Car2PC in a place with enough room so when you mount the car stereo back you do not break the adapter
5. You may use glove box or other spaces in a dash to direct USB+ Audio cables out
6. Mount your car stereo back into the dash, make sure it's clips are securely fastened
7. Now you can turn you car stereo on and switch it over to CD Changer mode. It should show Disk 1, Track 01 on a display.
8. **Congratulations!** You have installed Car2PC-HON1 adapter and you may use it right away with your PC/laptop

Driver installation

9. Make sure you turn your car stereo on
10. Connect USB cable to your PC/laptop
11. When connected, the PC running Windows 2000 or XP will prompt

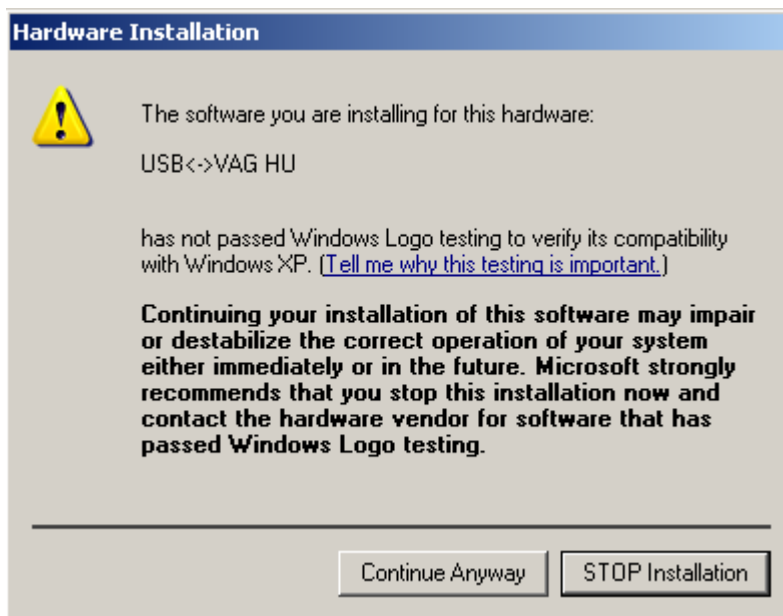


And then the dialog below will appear:



12. Insert driver's disk into CD drive and click Next

13. When Windows comes up with the message below, just click "Continue Anyway" button



14. This is it!

Driver installed and it is ready to be used with the included WinAmp or Windows Media Player.

Software installation

WinAmp

15. Locate the directory D:\winamp2\ and run the winamp295.exe file. Follow the instructions on a screen

16. Once installed make sure to run the plug-in installation located in D:\hump3_plugin directory

Windows Media Player

Usually Windows Media Player already preinstalled in a system. If not, visit the following link and install the WindowsMedia Player according to instructions on a web page:

<http://www.microsoft.com/windows/windowsmedia/default.mspx>

Once you have Windows Media Player installed, you may run the following file:

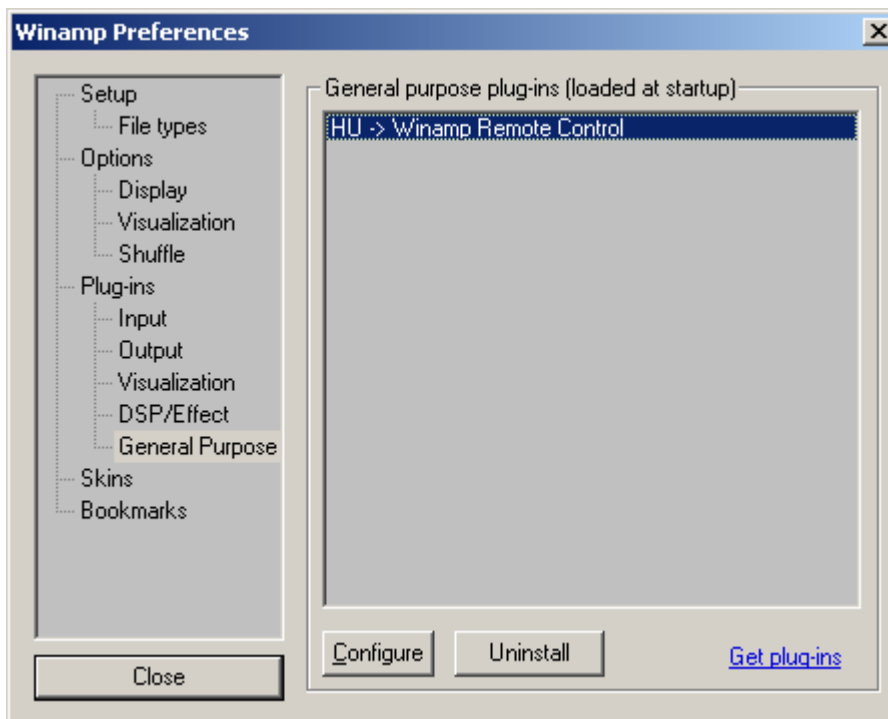
D:\wmp_plugin\wmphump_1_5_1.exe and install the plugin for Car2PC adapter.

Configuring Car2PC under WinAmp

WinAmp plug-in included on a disk supports very simple concept of playlists. Whenever you select buttons 1 through 6 on your headunit the plugin will load the appropriate playlist and start playing it from the position it remembers.

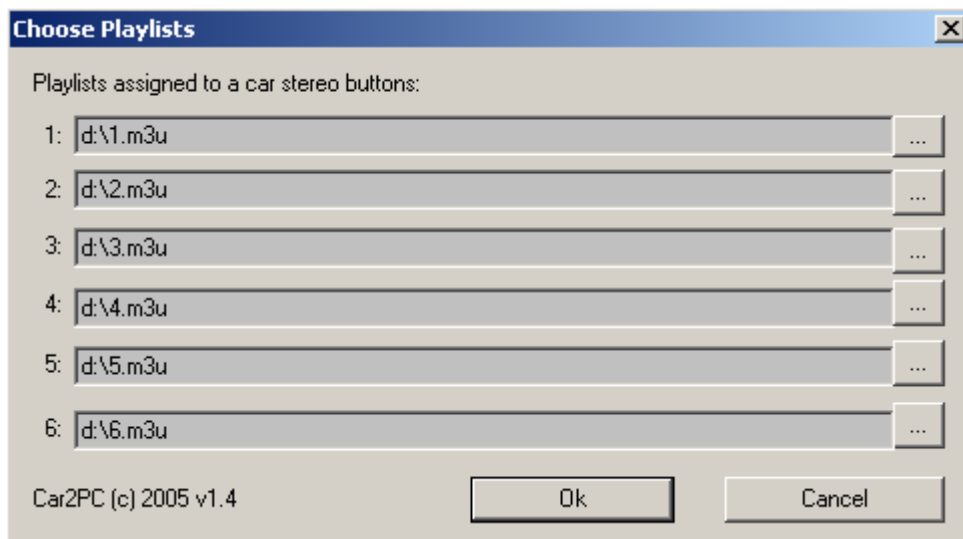
In order to configure which playlist will be playing upon button press, do the following:

1. Open WinAmp
2. Click Options->Preferences->Plug-ins->General Purpose->"HU -> WinAmp Remote Control" as shown below:



3. Click on Configure button

- On the dialog below you will be able to choose the playlist for each button from 1 to 6



- Once done, click Ok

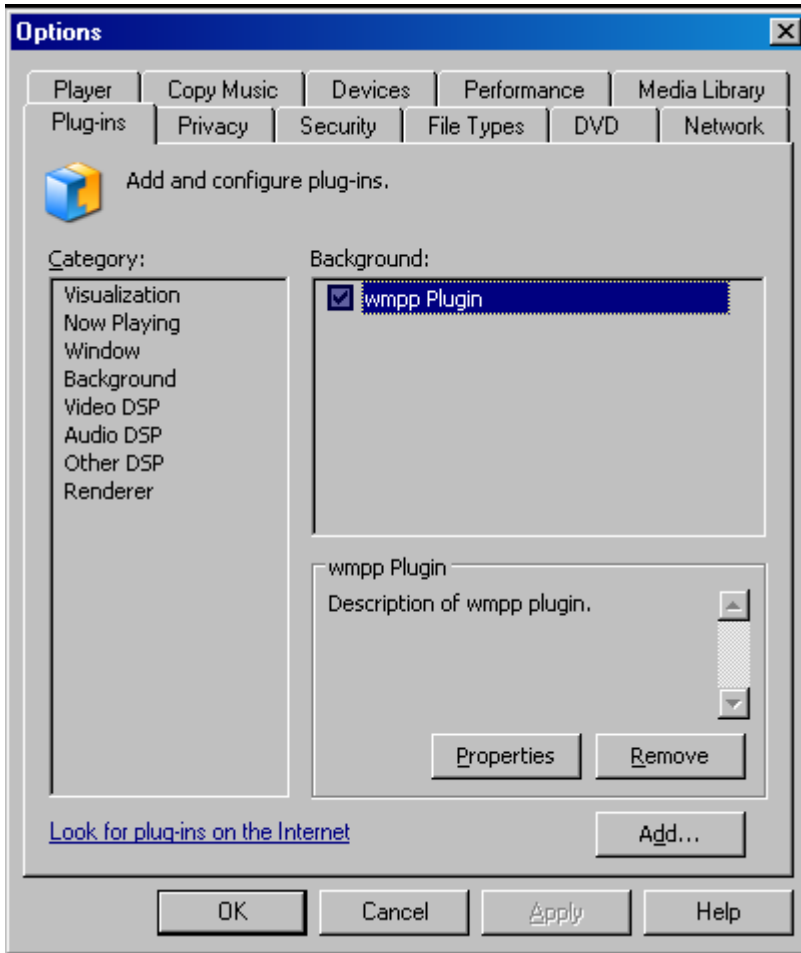
Configuring Car2PC under WMP

The WMP plug-in on CD disk supports very simple concept of playlists. Whenever you select buttons 1 through 6 on your head unit the plug-in will load the appropriate playlist and start playing it from the position it remembers in the configuration file.

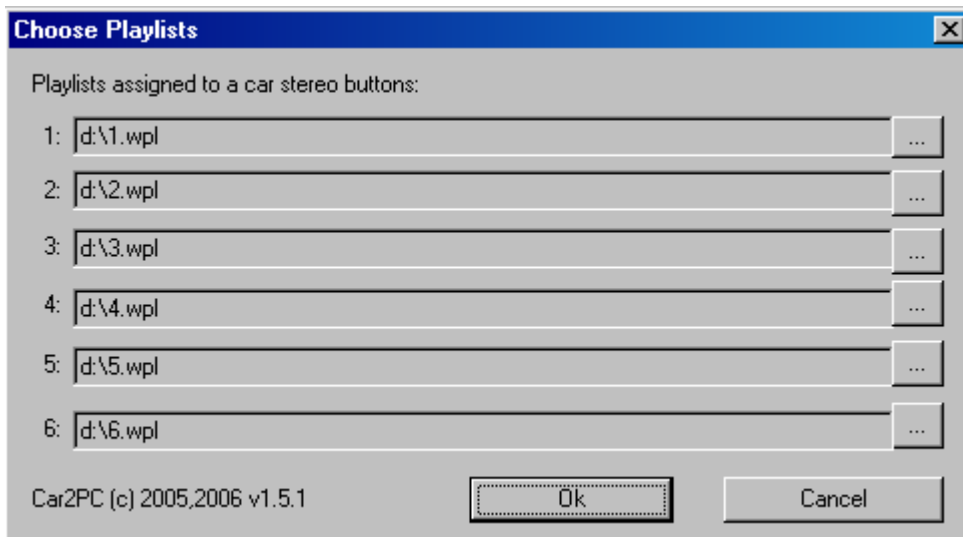
In order to configure which playlist will be playing upon button press, do the following:

- Open Windows Media Player

- Click Tools->Plugins->Background->wmppl plugin” as shown below:



- Click on Properties button
- On the dialog below you will be able to choose the playlist for each button from 1 to 6



- Once done, click Ok