

## Installation instructions

### **Subject**

Car2PC-HON1 adapter for Car PC / laptop integration into car stereo and AUX Interface for MP3 player

### **Models Supported**

Honda S2000 04 and newer  
Honda Accord 03-06 and newer  
Honda Civic 06 and newer  
Honda CRV 05-06 no build-in CD changer  
Honda Odyssey 05-06 no build-in CD changer  
Honda Pilot 06 and newer  
Honda Ridgeline 06 and newer  
Honda Element 03-06 and newer  
Acura TSX 04-06 and newer  
Acura RL 06 and newer  
Acura RSX 05-06 no build-in CD changer  
Acura CL 04-06 and newer  
Acura TL 04-06 and newer  
Acura MDX 05-06 and newer

### **Disclaimer**

Modifying the radio may void any outstanding warranty it may have.

- This product is not affiliated with any of the OEM manufactures
- There are no warranties expressed or implied by purchase of this product
- While every care has been taken to provide a quality product, we cannot guarantee the Car2PC-HON1 adapter to function correctly if installation is not done according to the instructions in this guide
- We're not liable for misuse of this product. Misuse includes improper installation, damage to the board or radio while trying to install, and illegal use of the modified radio

### **Tools needed:**

None

### **Preparation**

1. Turn off car engine and remove key from ignition
2. Un-mount your radio from the dash in order to get access to the back side of the radio.

### **Adapter installation**

3. Attach square 14 pins connector to the back of the Honda stereo. See the picture below.



4. Find a place where you can place Car2PC. In many cars there is enough room in the dash to place Car2PC.  
 Note: Make sure you mount Car2PC in a place with enough room so when you mount the car stereo back you do not break the adapter
5. You may use glove box or other spaces in a dash to direct USB+ Audio cables out
6. Mount your car stereo back into the dash, make sure it's clips are securely fastened
7. Now you can turn you car stereo on and switch it over to CD Changer mode. It should show Disk 1, Track 01 on a display.
8. **Congratulations!** You have installed Car2PC-HON1 adapter and you may use it right away with your PC/laptop

***Driver installation***

9. Make sure you turn your car stereo on
10. Connect USB cable to your PC/laptop
11. When connected, the PC running Windows 2000 or XP will prompt



And then the dialog below will appear:



12. Insert driver's disk into CD drive and click Next

13. When Windows comes up with the message below, just click "Continue Anyway" button



14. This is it!

Driver installed and it is ready to be used with the included WinAmp or Windows Media Player.

## Software installation

### WinAmp

15. Locate the directory D:\winamp2\ and run the winamp295.exe file. Follow the instructions on a screen

16. Once installed make sure to run the plug-in installation located in D:\hump3\_plugin directory

### Windows Media Player

Usually Windows Media Player already preinstalled in a system. If not, visit the following link and install the WindowsMedia Player according to instructions on a web page:

<http://www.microsoft.com/windows/windowsmedia/default.mspx>

Once you have Windows Media Player installed, you may run the following file:

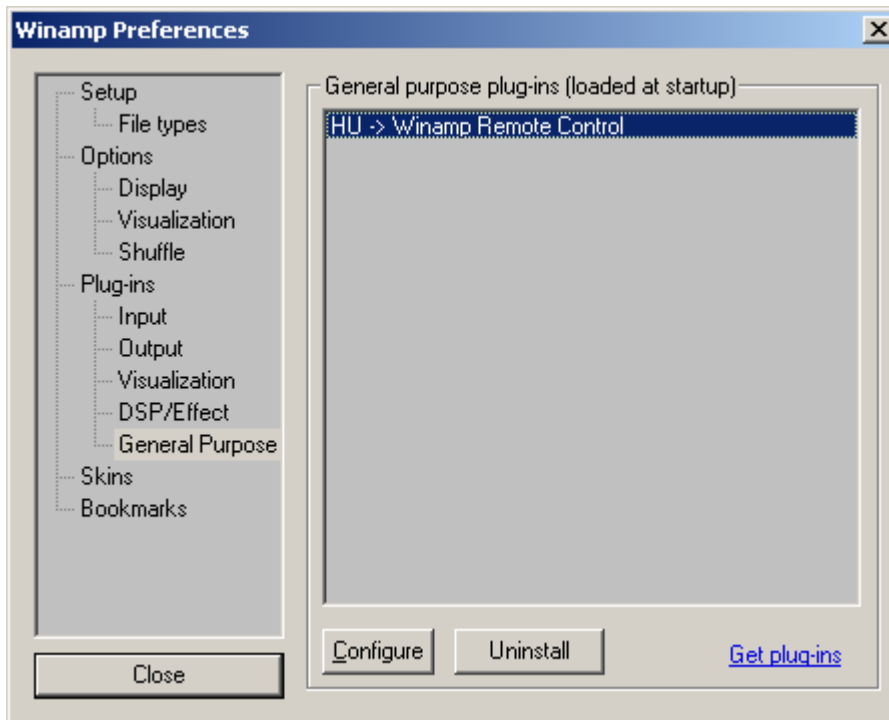
D:\wmp\_plugin\wmphump\_1\_5\_1.exe and install the plugin for Car2PC adapter.

### Configuring Car2PC under WinAmp

WinAmp plug-in included on a disk supports very simple concept of playlists. Whenever you select buttons 1 through 6 on your headunit the plugin will load the appropriate playlist and start playing it from the position it remembers.

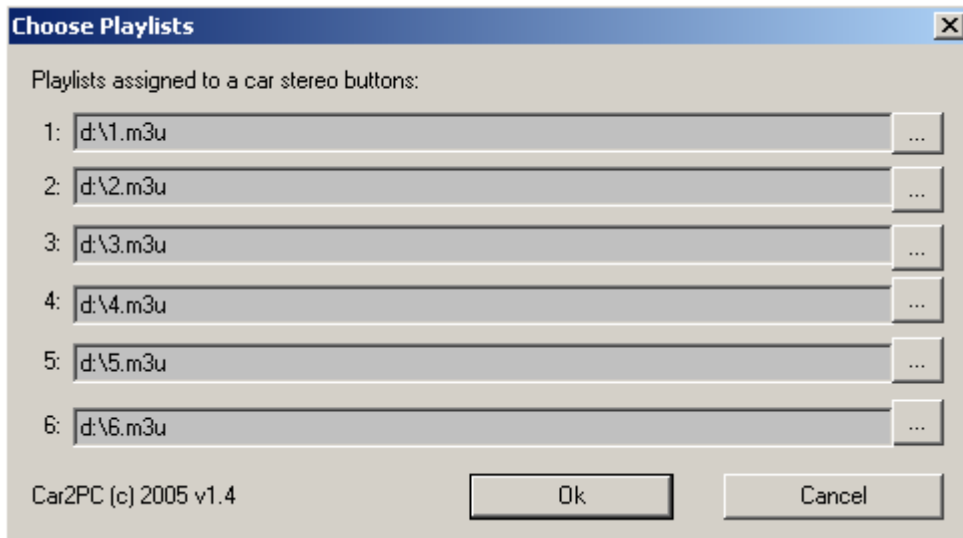
In order to configure which playlist will be playing upon button press, do the following:

1. Open WinAmp
2. Click Options->Preferences->Plug-ins->General Purpose->"HU -> WinAmp Remote Control" as shown below:



3. Click on Configure button

4. On the dialog below you will be able to choose the playlist for each button from 1 to 6



5. Once done, click Ok

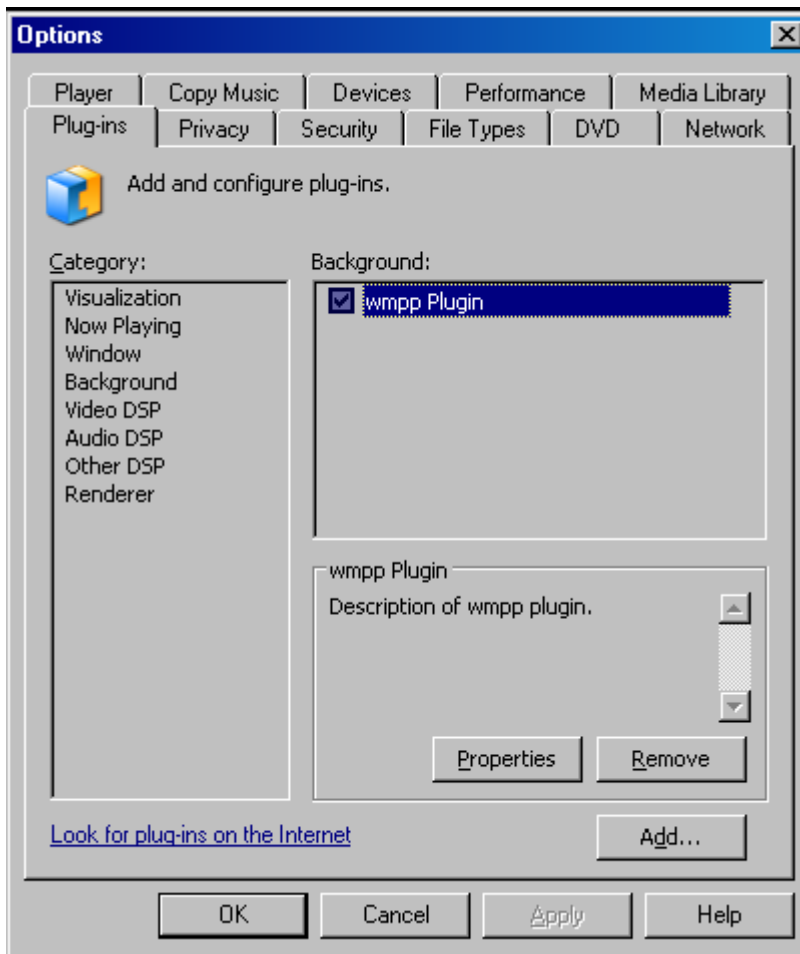
### ***Configuring Car2PC under WMP***

The WMP plug-in on CD disk supports very simple concept of playlists. Whenever you select buttons 1 through 6 on your head unit the plug-in will load the appropriate playlist and start playing it from the position it remembers in the configuration file.

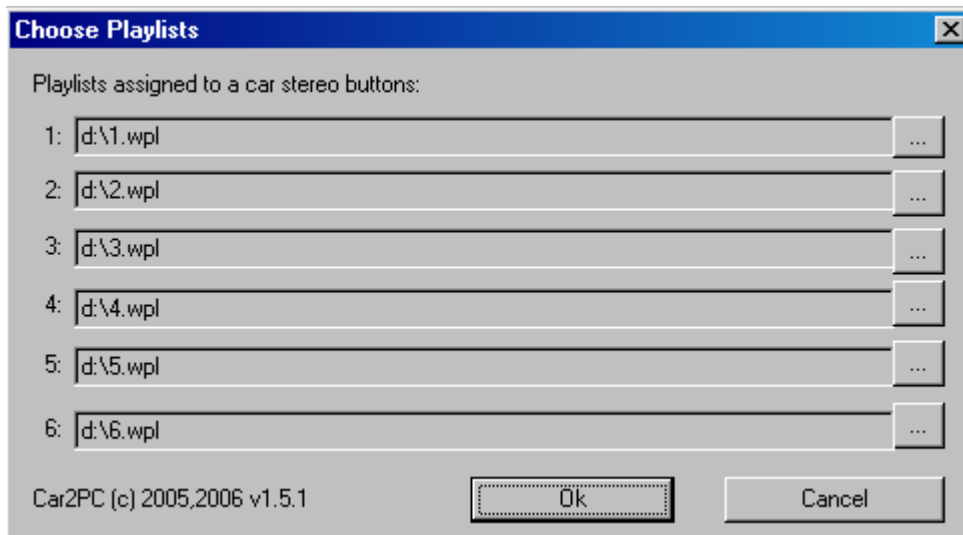
In order to configure which playlist will be playing upon button press, do the following:

1. Open Windows Media Player

- Click Tools->Plugins->Background->wmppl plugin” as shown below:



- Click on Properties button
- On the dialog below you will be able to choose the playlist for each button from 1 to 6



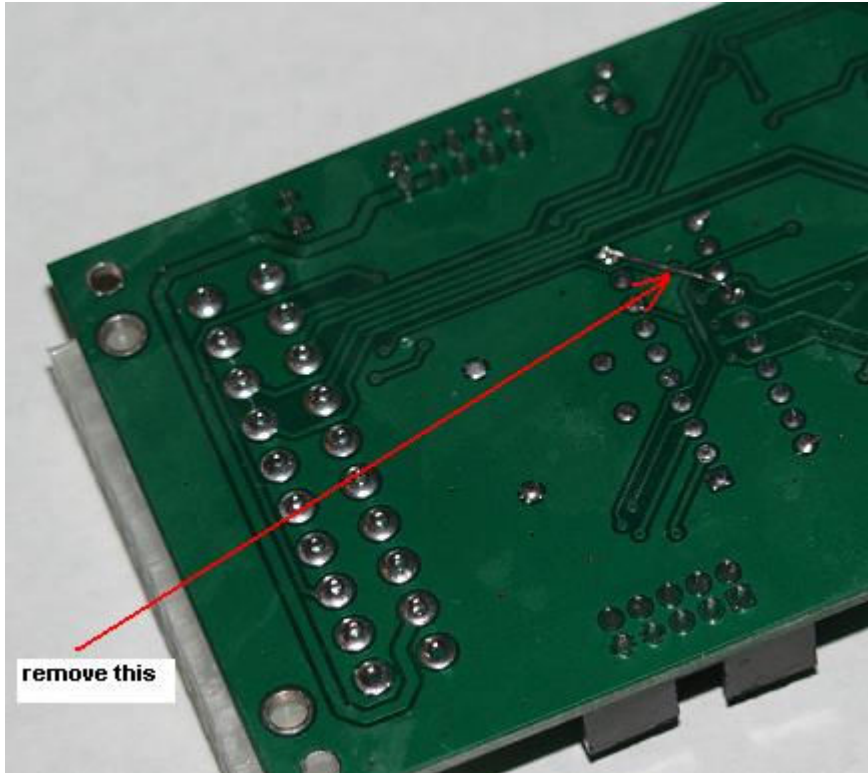
- Once done, click Ok

### Troubleshooting

By default CAR2PC-HON1 is set to emulate MD changer which is more common than CD changer on Honda/Acura. But some stereos support CD changer only. In this case your stereo may not see the CAR2PC-HON1 at all, even though PC will be able to detect the device properly.

In this case do the following steps:

1. Open up the adapter enclosure
2. Dismount PCB from enclosure and turn it upside down
3. Remove the shortcut on PCB to allow adapter to go into CD changer mode as shown below



4. Put PCB back into enclosure and snap it all together
5. Your stereo should be able to detect the CAR2PC-HON1 now.