

Installation instructions

Subject

Car2PC-BMW adapter for Car PC / laptop integration into car stereo and AUX Interface for MP3 player

Models Supported

BMW 1997+ the following models: E39, E37, E85, E52, E46, E38, E36, E39, E83, E53 (no dsp)

Mini 2000+

ROVER 75 1999 - 2005

LANDROVER Range Rover 2002 - 2004

ROVER MG ZT 2001 – 2005

Disclaimer

Modifying the radio may void any outstanding warranty it may have.

- This product is not affiliated with any of the OEM manufactures
- There are no warranties expressed or implied by purchase of this product
- While every care has been taken to provide a quality product, we cannot guarantee the Car2PC BMW adapter to function correctly if installation is not done according to the instructions in this guide
- We're not liable for misuse of this product. Misuse includes improper installation, damage to the board or radio while trying to install, and illegal use of the modified radio
- Find full version of our Terms And Conditions here: <http://indashpc.org/new/tac.html>

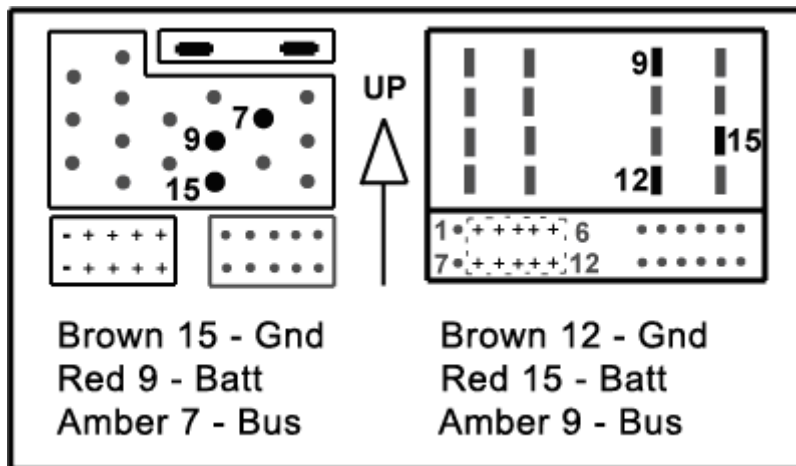
Tools needed

1. Car stereo removal strips. One can be found at:
<http://www.installer.com/cars/volkswagon.html>
2. Wire crimp tool (optional)

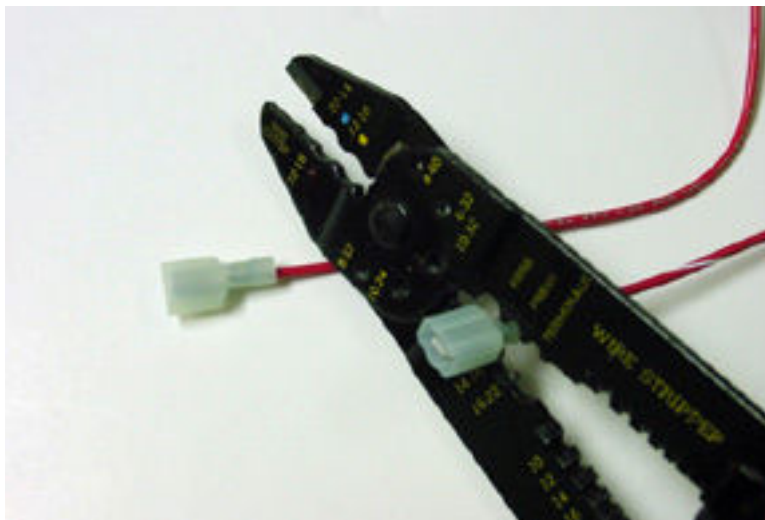
Preparation

1. Turn off car's engine and remove key from ignition
2. Using the stereo removal tools carefully remove radio from the dash pocket

- At the back of the stereo locate harness which connects your radio to the car. It should have pins like shown below (either of two shown) on a diagram



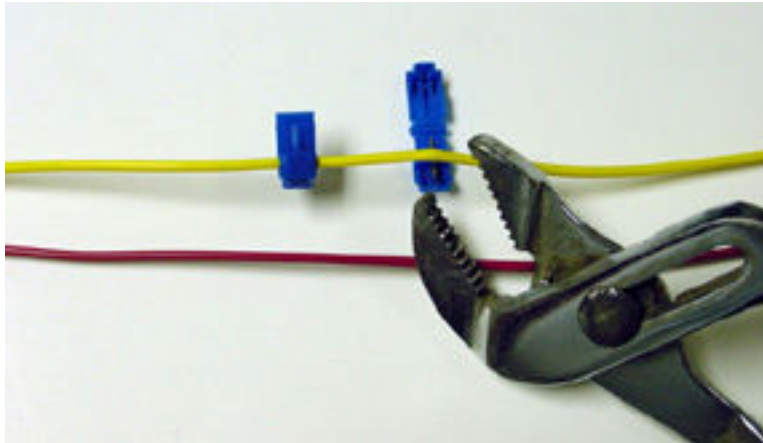
- 3 wires coming out of adapter are marked with the colors. Depending on your harness you need to connect adapter wires to the appropriate car stereo wires according to the picture above
- To simplify the installation 3 T-Tap clips have been included with the adapter
- Secure male terminals on a wires coming out of the adapters so you have it like shown below



Adapter installation

- Locate appropriate wires on a car stereo harness (refer diagram above)

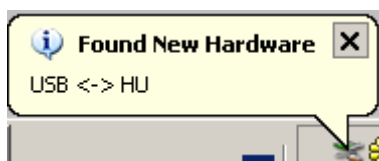
8. Snap T-Tap clip over the wire so it is fastened



9. Now you can attach male terminal to an appropriate T-Tap according to the harness diagram and color of the adapter wire
10. Use 10 pin black connector (audio cable) coming out of adapter and attach it as shown on a diagram above to the car stereo (shown as dotted rectangle with '+' signs).
Note: Make sure the white stripe on the black connector is looking up !
11. Find a place where you can place Car2PC. In all BMW/Mini there is enough room inside the dash to place Car2PC.
Note: Make sure you place Car2PC in a place with enough room so when you mount car stereo back you do not break the adapter
12. You may use glove box or other spaces on a dash to direct USB+ Audio cables to
13. Mount your car stereo back into the dash, make sure it's clips are securely fastened
14. Now you can turn you car stereo on and switch it over to CD Changer mode. It should show Disk 1, Track 01 on a display. If it is not - see Troubleshooting section.
15. Congratulations! You have installed Car2PC adapter and you may use it right now either as AUX input for any multimedia player or use it with your PC/laptop.

Driver installation

16. Make sure you turn your car stereo on
17. Connect USB cable to your PC/laptop
18. Upon connection PC if it runs Windows 2000 or XP will prompt

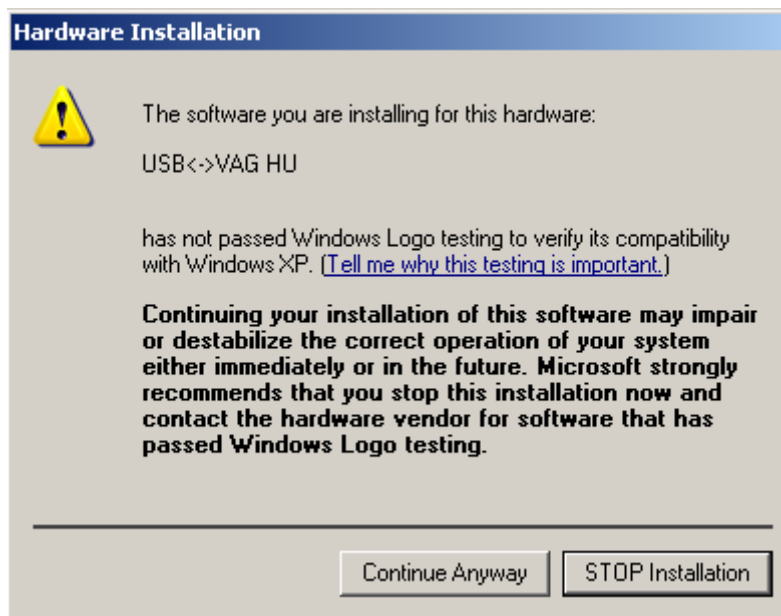


And then the dialog below will appear:



19. Insert driver's disk into CD drive and click Next

20. When Windows comes up with the message below, just click "Continue Anyway" button



21. This is it. Driver installed and it is ready to be used with the included WinAmp software.

Software installation

22. Locate the directory D:\winamp2\ and run the winamp295.exe file. Follow the instructions on a screen

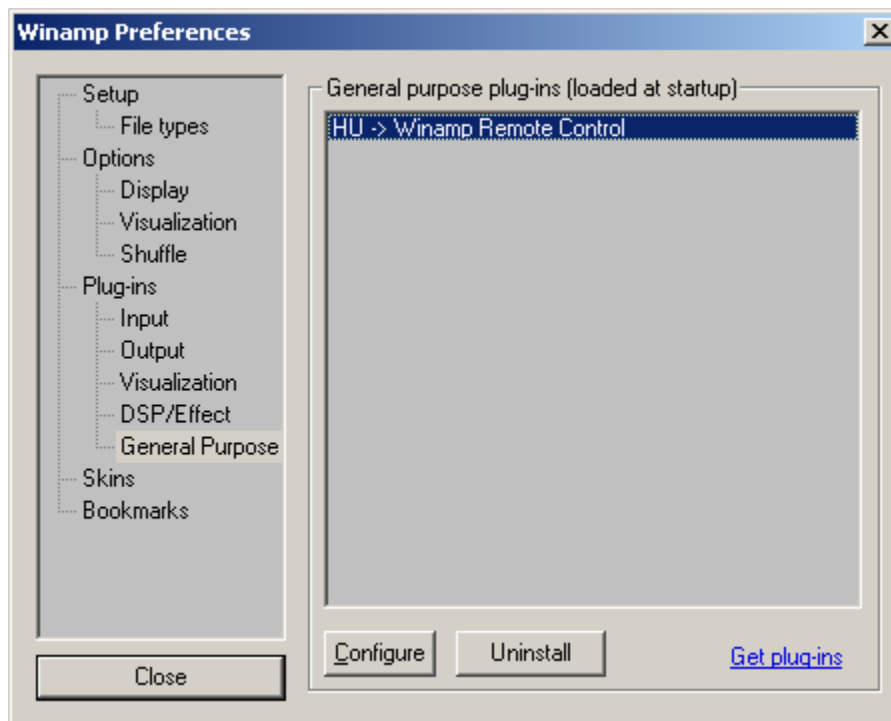
23. Once installed make sure to run the plug-in installation located on hump3_plugin directory

Configuring Car2PC

WinAmp plug-in included on a disk supports very simple concept of playlists. Whenever you select buttons 1 through 6 on your headunit, plugin will load the appropriate playlist and start playing it from the position it remembers.

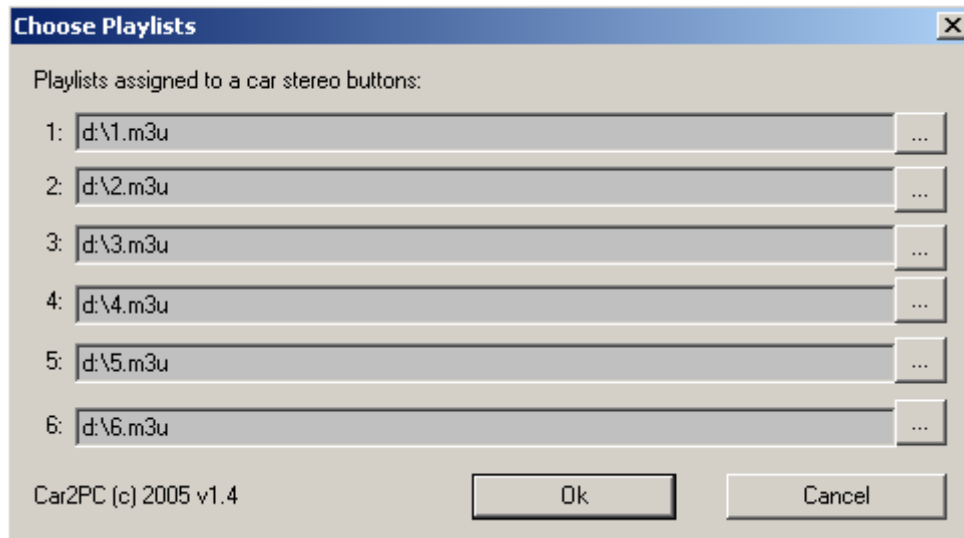
In order to configure which playlist will be playing upon button press, do the following:

1. Open WinAmp
2. Click Options->Preferences->Plug-ins->General Purpose->"HU -> WinAmp Remote Control" as shown below:



3. Click on Configure button

On the dialog below you will be able to choose the playlist for every button from 1 to 6



4. Once done, click Ok

Troubleshooting

IBus wire may get lose

Some people report that using our T-Tap clips, the IBus wire may not receive proper connection due to its wire size. We recommend to make sure the IBus wire is securely attached by using multimeter or slightly tight up the T-Tap connector so its slot get smaller.